



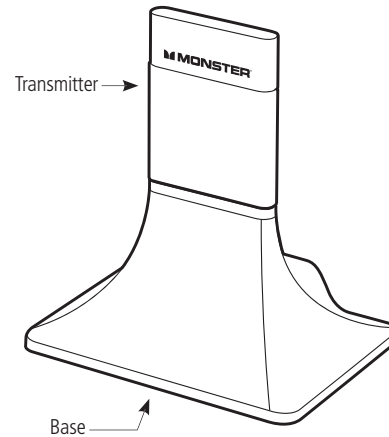
iSoniCast™

Wireless Audio Bridge

iSoniCast Features

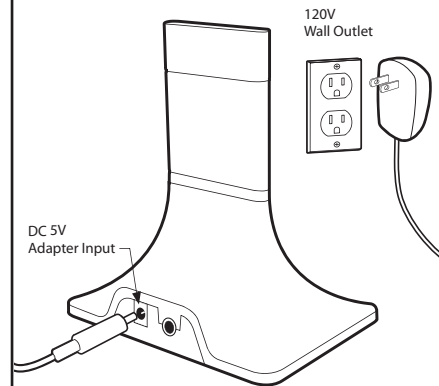
- Uses iPod® for control: no separate remote needed
- 2.4GHz wireless technology for pure sound
- Ultra-low power consumption: no batteries needed
- 2m mini-to-RCA cable included
- *XLN® DoubleHelix™* cable construction protects against noise and interference

Monster iSoniCast



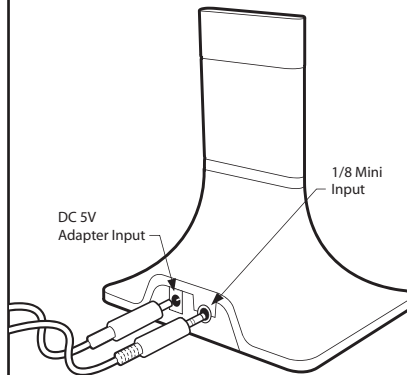
Powering Your iSoniCast

Plug the iSoniCast power cord into the power port (DC 5V adapter input) on the base station. Then plug the AC adapter into a 120V wall outlet.



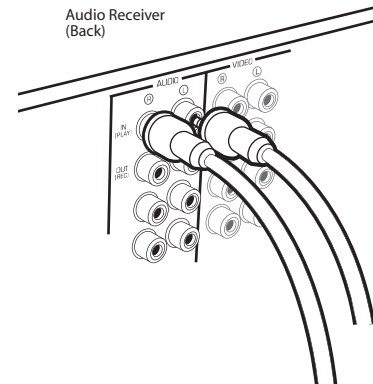
Connecting the Audio Cable

Insert the included audio cable's 1/8 inch mini-jack into the audio port on the iSoniCast base.



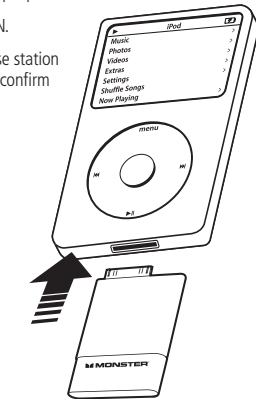
Connecting to Your A/V Receiver

Ensure that your receiver is turned OFF, then plug the iSoniCast audio cable's RCA stereo connectors into the stereo audio ports on your receiver.



Connecting to Your iPod

- Insert the iSoniCast transmitter into the iPod's 30 pin port.
- Turn your iPod ON.
- The iSoniCast base station will glow blue to confirm signal reception.



Important Note:

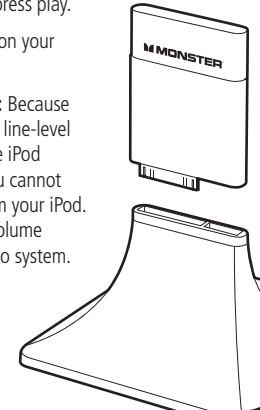
The iSoniCast transmitter does not need to be charged; it draws minimal power from your iPod.

Adjusting Your Volume

Use your sound system's remote to turn on your main receiver and set the volume to low to ensure against sudden, unwanted loud noise. Switch the receiver to the audio input used by the iSoniCast.

- Choose a playlist or song on your iPod and press play.
- Adjust volume on your receiver.

Important Note: Because the iSoniCast uses line-level audio out from the iPod 30-pin port, so you cannot adjust volume from your iPod. You must adjust volume through your stereo system.



We invite you to visit the Monsters at: MonsterCable.com



© 2007 Monster Cable Products, Inc.
455 Valley Drive Brisbane, CA 94005 USA
1-877-800-8989

Engineered in the USA and manufactured for Monster to its quality specifications. Made in China.

rm 181683

FCC Notice: This device complies with Part 15 of the FCC rules. Operation is subject to the following two conditions: (1) this device may not cause harmful interference, and (2) this device must accept any interference received, including interference that may cause undesired operation.

Caution: Changes or modifications not expressly approved by Monster Cable Products, Inc. may void the users authority to operate this device.

Note: This equipment has been tested and found to comply with the limits for a Class B digital device pursuant to Part 15 of the FCC rules. These limits are designed to provide reasonable protection against harmful interference in a residential installation. This equipment generates, uses, and can radiate radio frequency energy and, if not installed and used in accordance with the instructions, may cause harmful interference to radio communications. However, there is no guarantee that interference will not occur in a particular installation. If this equipment does cause harmful interference to radio or television reception, which can be determined by tuning the equipment off and on, the user is encouraged to try to correct the interference by one or more of the following measures:

- Reorient or relocate the receiving antenna
- Increase the separation between the equipment and receiver
- Connect the equipment into an outlet on a circuit different from that to which the receiver is connected
- Consult the dealer or an experienced radio/TV technician for help

1. Transmitter
FCC ID: RJE190070-00 IC: 5153A-19007000
2. Receiver
FCC ID: RJE190069-00 IC: 5153A-19006900

LIMITED WARRANTY FOR CONSUMERS

United States

Monster Cable Products, Inc., 455 Valley Drive
Brisbane, CA 94005 (415) 840-2000. ("Monster")
extends You this Limited Warranty. Statutory or
common law may provide You with additional
rights or remedies, which shall not be affected
by this Limited Warranty.

DEFINITIONS

"Adequate Use" means use of the Product (i) within a home or dwelling, (ii) for private (as opposed to commercial) purposes, (iii) in conformance with all applicable local, state or federal law, code or regulations (including without limitation building and/or electrical codes), (iv) in accordance with manufacturer recommendations and/or instructions in the materials and documentation that accompany the Product, (v) with proper electrical grounding.

"Authorized Dealer" means any distributor, re-seller or retailer that (i) was duly authorized to do business in the jurisdiction where it sold the Product to You, (ii) was permitted to sell You the Product under the laws of the jurisdiction where You bought the Product, and (iii) sold You the Product new and in its original packaging.

"Formal Warranty Claim" means a claim made in accordance with the section "Formal Warranty Claims" herein.

"Product" means a Product listed in the Specifications Table below, and (iii) You bought from new from an Authorized Dealer new and in its original packaging.

"Product Defect" means an inadequacy of the Product that existed at the time when You received the Product from an Authorized Dealer and that causes a failure of the Product to perform in accordance with Monster's documentation accompanying the Product, unless such failure has been caused completely or partly by (a) any use other than Adequate Use, (b) transportation, neglect, misuse or abuse by anyone other than Monster's employees; (c) alteration, tampering or modification of the product by anyone; (d) accident (other than a malfunction that would otherwise qualify as a Product Defect);

(e) accident; (f) maintenance or service of the Product by anyone other than a Monster employee or authorized service technician; (g) exposure of the Product to heat, bright light, sun, liquids, sand or other contaminants; or (h) acts outside the control of Monster, including without limitation acts of God, fire, storms, earthquake or flood.

"Warranty Period" means the time period during which Monster must have received Your Formal Warranty Claim. The different Warranty Periods related to Product Defects are defined in the Specifications Table below. The Warranty Period commences on the date when You purchased or received (whichever occurs later) the Product from an Authorized Dealer as evidenced by the Authorized Dealer's

invoice, sales receipt, or packing slip. If You do not have written proof of the date of purchase or receipt, then the Warranty Period commences three (3) months after the date when the Product left Monster's or its factory as evidenced by Monster's records. The Warranty Period ends after the time defined in the Specifications Table has expired or after You have transferred ownership of the Product, whichever occurs earlier.

"You" means the first individual person that purchased the Product in its original packaging from an Authorized Dealer. This Limited Warranty does not apply to persons or entities that bought the Product (i) in used or unpackaged form, (ii) for resale, lease or other commercial use, or (iii) from someone other than an Authorized Dealer.

SCOPE OF THIS LIMITED WARRANTY

Products. If a Product contained a Product Defect when You bought it from an Authorized Dealer and Monster receives a Formal Warranty Claim from You before the end of the Warranty Period for Product Defects applicable to the affected Product, then Monster will provide You with one of the following remedies: Monster will (1) repair or, at Monster's sole discretion, replace the Product, or (2) refund to You the purchase price paid for the affected Product from an Authorized Dealer if repair or replacement

is not commercially practicable or cannot be timely made. NOTE: MONSTER does not assume any liability for ANY INCIDENTAL, CONSEQUENTIAL OR INDIRECT DAMAGES.

GENERAL PROVISIONS

Choice of Law/Jurisdiction. This Limited Warranty and any disputes arising out of or in connection with this Limited Warranty ("Disputes") shall be governed by the laws of the State of California, USA, excluding conflicts of law principles and excluding the Convention for the International Sale of Goods. The courts located in the State of California, USA shall have exclusive jurisdiction over any Disputes.

Serial number. If this Product contains a serial number, this Limited Warranty is void if the label on the Product bearing the serial number has been removed, altered, or defaced.

No Liability for Advice. Any technical or other advice offered before or after delivery with respect to the use and application of the Product is furnished without charge and subject to the understanding that such advice is issued at the purchaser's sole risk without any limitation or modifications of any disclaimer or other provision contained herein.

Other Rights. THIS LIMITED WARRANTY GIVES YOU SPECIFIC LEGAL RIGHTS, AND YOU MAY ALSO HAVE OTHER RIGHTS, WHICH VARY FROM STATE TO STATE AND WHICH SHALL NOT BE AFFECTED BY THIS LIMITED WARRANTY. THIS WARRANTY EXTENDS ONLY TO YOU AND CANNOT BE TRANSFERRED OR ASSIGNED.

Registration. Please register Your Product at www.MonsterCable.com/Warranty. Failure to register will not diminish Your warranty rights.

SPECIFICATIONS TABLE

Product Model No.	Warranty Period for Product
iSoniCast™	One (1) Year

FORMAL WARRANTY CLAIM

How To Make A Claim. In the event of a Product Defect, You must follow these instructions: (1) Call 1-877-800-8989; (2) Give a detailed explanation of the Product Defect; (3) Obtain a Return Authorization Number; (4) Return the Products, shipping prepaid by You, to Monster for verification of Product Defect, along with a copy of Your original sales receipts and proof of purchase (UPC label) for such Products, and printed Return Authorization Number on the outside of the return package (the claim

form will include instructions for return). IMPORTANT: IN ORDER TO EXERCISE YOUR RIGHTS UNDER THIS LIMITED WARRANTY YOU MUST SUBMIT YOUR ORIGINAL SALES RECEIPTS AND A PROOF OF PURCHASE (UPC LABEL OR PACKING SLIP FOR THE PRODUCTS).

Further Proceedings. Monster will reimburse You for any shipping costs that You incurred in accordance with Monster's instructions and, at its discretion, either (a) direct You to obtain a repair estimate at a service center for the Product; or, (b) make a payment to You in accordance with the scope of this Limited Warranty.

Timing. If You bring a Formal Warranty Claim and fully comply with all terms and conditions of this Limited Warranty, Monster will use its best efforts to provide You with a remedy within thirty (30) days after receipt of Your Formal Warranty Claim (if You reside in the United States- forty-five (45) days if You reside elsewhere), unless obstacles outside Monster's control delay the process.

Ver.112003 – ©2004-2006 Monster Cable Products, Inc.