

 **MONSTER®**

# SIRIUS HOME ANTENNA

FOR |

**SIRIUS**   
SATELLITE RADIO

## USER GUIDE & WARRANTY

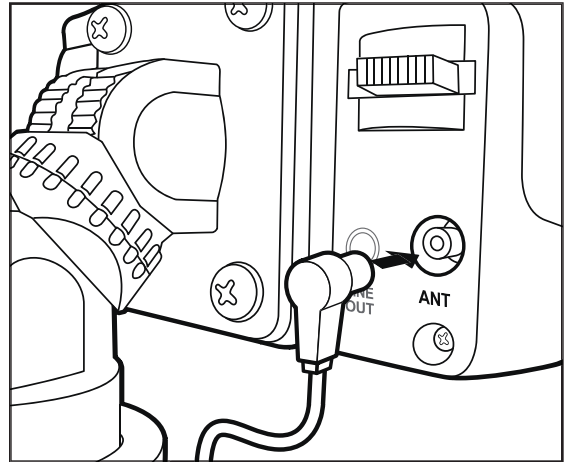
Thank you for purchasing the Monster® SIRIUS Home Antenna for SIRIUS Satellite Radio. Your new antenna lets you enjoy SIRIUS Satellite Radio in the comfort of your own home (with a SIRIUS receiver and subscription). Connecting your Home Antenna to your SIRIUS receiver or Plug & Play tuner is easy. Simply follow the numbered instructions to ensure optimal performance.

MSR ANT HM

## HOOK-UP INSTRUCTIONS

### Step 1

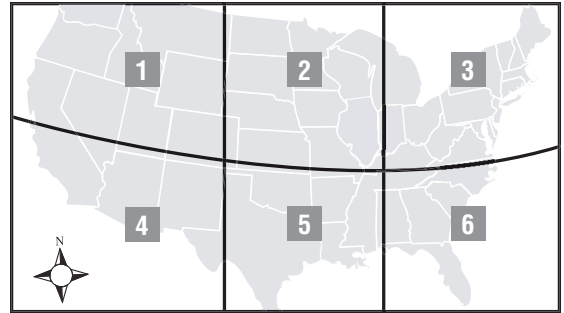
Connect the Monster® SIRIUS Home Antenna to your SIRIUS receiver or Plug & Play tuner by inserting the antenna's silver connection end into the port on your receiver/tuner labeled "ANT" or "SAT".



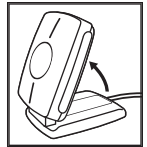
## Step 2

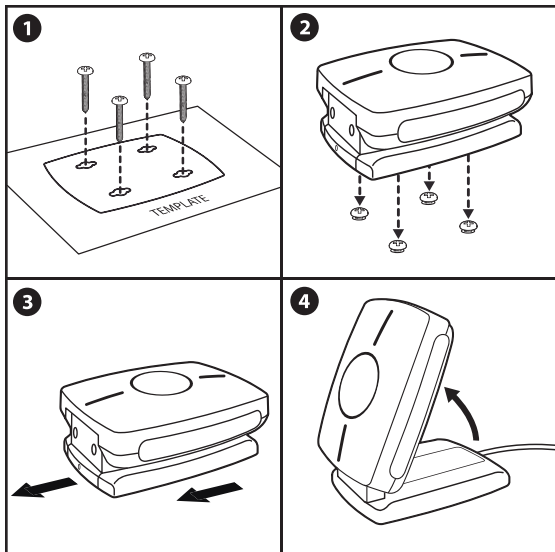
Determine the optimal location to place your Home Antenna by turning on your system and adjusting the antenna angle until you are satisfied with reception quality. Optimal antenna placement is dependent on your location in relation to the SIRIUS satellites. In general, the antenna can be placed inside or out facing the direction of the sky recommended in the adjacent map, as long as there are no obstacles blocking the signal from the satellite. Once you determine a placement location, temporarily attach the antenna with tape or other secure substance, as you should test the consistency of reception for three days before mounting permanently.

Monster SIRIUS Antenna Extension Cables are also available should you need a longer cable length to place your antenna where you want it. If you need assistance determining optimal antenna placement for your geographic location, call SIRIUS at 1.888.539.SIRIUS (7474).



1. Place the antenna facing **EAST**
2. Place the antenna facing **STRAIGHT UP**
3. Place the antenna facing **WEST**
4. Place the antenna facing **NORTHEAST**
5. Place the antenna facing **NORTH**
6. Place the antenna facing **NORTHWEST**





### Step 3

If you are satisfied with your reception quality after three days, mount the antenna in place. Begin by visiting your local hardware store for mounting advice and to purchase needed materials (anchors, screws etc) applicable to your particular mounting surface (wood, drywall, concrete, etc.). We suggest taking Antenna as reference for hole

size. Tape the Mounting Template in the back of this guide to your desired mounting location. Drill a 1/16" or 1/32" pilot hole at each hole position to allow easier installation of anchors/screws and follow your hardware store's instructions. Be sure to leave about 1/8" of space between the wall and the screw head to allow room for attaching the antenna. Place the antenna base over the screws and slide down until locked in place. Check that the antenna is attached securely before releasing, then angle for the best reception.

**Note:** If you are installing your home antenna to a drywall surface, be sure to use extra care when drilling your pilot holes and wall anchors to ensure stability. If you are installing your home antenna to a concrete or metallic surface, Monster recommends you enlist the help of a professional installer.

### Step 4

Installation complete! Now you can enjoy the 120+ channels of music, sports, news and entertainment your new Monster SIRIUS Home Antenna helps to provide.

## **LIMITED WARRANTY FOR CONSUMERS**

### **United States**

Monster Cable Products, Inc. 455 Valley Drive, Brisbane, CA 94005 USA, 1-415-840-2000 ("Monster") extends to You this Limited Warranty. Statutory or common law may provide You with additional rights or remedies, which shall not be affected by this Limited Warranty.

### **DEFINITIONS**

**"Adequate Use"** means use of the Product (i) within a home or dwelling, (ii) for private (as opposed to commercial) purposes, (iii) in conformance with all applicable local, state or federal law, code or regulations (including without limitation building and/or electrical codes), (iv) in accordance with manufacturer recommendations and/or instructions in the materials and documentation that accompany the Product, and (v) with proper electrical grounding.

**"Authorized Dealer"** means any distributor, reseller or retailer that (i) was duly authorized to do business in the jurisdiction where it sold the Product to You, (ii) was permitted to sell You the Product under the laws of the jurisdiction where You bought the Product, and (iii) sold You the Product new and in its original packaging.

**"Formal Warranty Claim"** means a claim made in accordance with the section "Formal Warranty Claims" herein.

**"Product"** means a Product (i) that is listed in the Specifications Table below, (ii) that You bought from an Authorized Dealer new and in its original packaging, and (iii) whose serial number, if any, has not been removed, altered, or defaced.

**"Product Defect"** means a defect, malfunction, non-conformance to this Limited Warranty, or other inadequacy of the Product that existed at the time when You received the Product from an Authorized Dealer and that causes a failure of the Product to perform in accordance with Monster's documentation accompanying the Product, unless such failure has been caused completely or partly by (a) any use other than Adequate Use, (b) transportation, neglect, negligence misuse or abuse by anyone other than Monster's employees; (c) alteration, tampering, modification, or installation of the product by anyone other than a Monster employee; (d) accident (other than a malfunction that is caused by a Product Defect), including power surges; (e) maintenance or service of the Product by anyone other than a Monster employee; (f) exposure of the Product to heat, bright light, sun, liquids, sand or other contaminants; or (g) acts outside the control of Monster, including without limitation acts of God, fire, storms, earthquake or flood.

**"Warranty Period"** means the time period during which Monster must have received Your Formal Warranty Claim. The different Warranty Periods related to Product Defects are defined in the Specifications Table below. The Warranty Period commences on the date when You purchased or received (whichever occurs later) the Product from an Authorized Dealer as evidenced by the Authorized Dealer's invoice, sales receipt or packing slip. If You do not have written proof of the date of purchase or receipt, then the Warranty Period commences three (3) months after the date when the Product left Monster's factory as evidenced by Monster's records. The Warranty Period ends after the time defined in the Specifications Table has expired or after You have transferred ownership of the Product, whichever occurs earlier. Also, You must

call Monster and obtain a Return Authorization Number (as described under "How to Make a Claim") within two (2) months after You discover a Product Defect (or should have discovered it, if such Product Defect was obvious).

**"You"** means the first individual person that purchased the Product in its original packaging from an Authorized Dealer. This Limited Warranty does not apply to persons or entities that bought the Product (i) in used or unpackaged form, (ii) for resale, lease or other commercial use, or (iii) from someone other than an Authorized Dealer.

### **SCOPE OF THIS LIMITED WARRANTY**

**PRODUCTS.** If a Product contained a Product Defect when You bought it from an Authorized Dealer and Monster receives a Formal Warranty Claim from You within two (2) months after You discover such Product Defect (or should have discovered it, if such Product Defect was obvious) and before the end of the Warranty Period for Product Defects applicable to the affected Product, then Monster will provide You with one of the following remedies: Monster will (1) repair or, at Monster's sole discretion, replace the Product, or (2) refund to You the purchase price You paid to the Authorized Dealer for the affected Product if repair or replacement is not commercially practicable or cannot be timely made. NOTE: MONSTER DOES NOT ASSUME ANY LIABILITY FOR ANY INCIDENTAL, CONSEQUENTIAL OR INDIRECT DAMAGES UNDER THIS LIMITED WARRANTY. SOME STATES DO NOT ALLOW THE EXCLUSION OR LIMITATION OF INCIDENTAL OR CONSEQUENTIAL DAMAGES, SO THE ABOVE LIMITATION OR EXCLUSION MAY NOT APPLY TO YOU.

### **GENERAL PROVISIONS**

**CHOICE OF LAW/JURISDICTION.** This Limited Warranty and any disputes arising out of or in connection with this Limited Warranty ("Disputes") shall be governed by the laws of the State of California, USA, excluding conflicts of law principles and excluding the Convention for the International Sale of Goods. The courts located in the State of California, USA shall have exclusive jurisdiction over any Disputes.

**OTHER RIGHTS.** THIS LIMITED WARRANTY GIVES YOU SPECIFIC LEGAL RIGHTS, AND YOU MAY ALSO HAVE OTHER RIGHTS, WHICH VARY FROM STATE TO STATE. THIS LIMITED WARRANTY EXTENDS ONLY TO YOU AND CANNOT BE TRANSFERRED OR ASSIGNED. If any provision of this Limited Warranty is unlawful, void or unenforceable, that provision shall be deemed severable and shall not affect any remaining provisions. In case of any inconsistency between the English and other versions of this Limited Warranty, the English version shall prevail.

**Registration.** Please register Your Product at [www.monstercable.com](http://www.monstercable.com). Failure to register will not diminish Your warranty rights.

## SPECIFICATIONS TABLE

PRODUCT MODEL NUMBER	WARRANTY PERIOD FOR PRODUCT
MSR ANT HM	One (1) Year

## FORMAL WARRANTY CLAIM

**HOW TO MAKE A CLAIM.** (1) Call, or write to, Monster within two (2) months after You discover a Product Defect (or should have discovered it, if such Product Defect was obvious); (2) Give a detailed explanation of how the damage occurred; (3) Obtain a Return Authorization Number; (4) Upon receipt of a claim form (which may be sent to You after You filed Your Formal Warranty Claim), fill out the claim form entirely; (5) Return the Products, shipping prepaid by You (to be refunded if You are entitled to a remedy under the Scope of this Limited Warranty), to Monster for verification of damage, along with a copy of Your original sales receipts and proof of purchase (UPC label or packing slip) for such Products, the completed claim form, and printed Return Authorization Number on the outside of the return package (the claim form will include instructions for return).

**TOLL-FREE TELEPHONE NUMBERS.** United States: 1-877-800-8989 (toll-free), or 1-415-840-2000.

**ADDRESS:** Monster Cable Products, Inc. 455 Valley Drive, Brisbane, CA 94005 USA

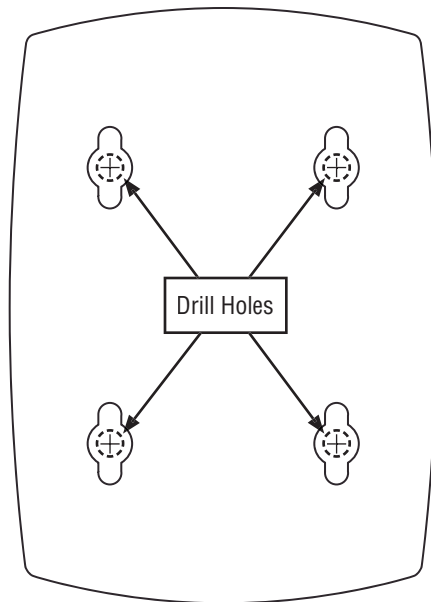
**FURTHER PROCEEDINGS.** Monster will determine whether a Product Defect existed. Monster may, at its discretion, direct You to obtain a repair estimate at a service center. If a repair estimate is required, You will be instructed on how to properly submit the estimate and the resulting invoice to Monster for payment. Any fees for repairs may be negotiated by Monster.


**TIMING.** If You bring a Formal Warranty Claim and fully comply with all terms and conditions of this Limited Warranty, Monster will use its best efforts to provide You with a remedy within thirty (30) days after receipt of Your Formal Warranty Claim (if You reside in the United States-forty-five (45) days if You reside elsewhere), unless obstacles outside Monster's control delay the process.

Ver.12/14/2004 – US ©2005 Monster Cable Products, Inc.

## MOUNTING TEMPLATE

(For Step 3)



 - 1/16" or 1/32" Drill Holes

 **MONSTER<sup>®</sup>**

**FOR** | **SIRIUS**   
SATELLITE RADIO

Visit us on the Web at  
**MonsterCable.com**

Monster SIRIUS Home Antenna is designed and engineered  
in the USA, and manufactured to Monster  
quality specifications in China.

© Copyright 2005 Monster Cable Products, Inc.  
455 Valley Drive, Brisbane CA 94005 USA

Monster, the Monster logo and the product packaging are trademarks or  
registered trademarks of Monster Cable Products, Inc. or its subsidiaries in  
the U.S. and other countries. "SIRIUS" and the SIRIUS dog logo are registered  
trademarks of SIRIUS Satellite Radio, Inc. All rights reserved.