

# **Sonocaddie AUTO PLAY** **Golf GPS**



## **User's Guide** **Sonostar Inc.**

V.3.0.0.1\_E

## Contents

Welcome .....	4
Warnings .....	4
Cautions .....	4
Chapter 1. Introduction .....	5
1.1 Features .....	5
1.2 Display .....	6
1.2.1 Symbol Description .....	7
1.2.2 Status Area .....	7
1.2.3 Battery level .....	7
Chapter 2. Getting started .....	8
2.1 Charging .....	8
Chapter 3. Before starting a Game .....	8
3.1 Power ON/OFF .....	8
3.2 Main Menu .....	9
3.2.1 GPS : Provides the GPS reception status information. ....	9
3.2.2 Settings .....	9
Chapter 4. Course Management .....	10
4.1 Before Uploading Course Information .....	10
4.1.1 Login or Join Free Sonocaddie Membership .....	10
4.1.2 Install "AUTO PLAY Software" in Your Computer .....	10
4.1.3 Connect AUTO PLAY and Computer .....	12
4.2 Update Course Data .....	12
4.2.1 Manage data in AUTO PLAY .....	14
Chapter 5. Starting a game .....	16
5.1 Start with Existing Courses .....	16
5.1.1 Course Auto Search .....	16
5.1.2 Search Courses from COURSE LIST (Manual Search) .....	17
5.1.3 Auto Hole .....	17
5.2 Course Management for AUTO PLAY device .....	18
5.2.1 Create a New Course .....	18
5.2.2 Delete a Course .....	18
5.2.3 To Rename a Course .....	19
5.3 Adding New Reference Points .....	19
5.3.1 Mapping a hole .....	19
5.4 Reference Points next to Green .....	20
5.5 Reference Points on Green .....	20
5.6 Editing Reference Points .....	20

5.7 Delete Reference Points .....	21
5.8 Green Close-Up Function .....	21
5.8.1 Double Green .....	21
5.9 Mark Function (Shot Measurement) .....	22
5.10 Scorecard Function (Optional Function) .....	23
5.10.1 Activate your scorecard function .....	23
5.10.2 NORMAL and PRO function .....	23
5.10.3 Enter Scores .....	24
5.10.4 Review Scorecard and View Analysis .....	24
Appendices.....	25
A. Specification.....	25
B. System Requirement .....	26
C. Description Abbreviations.....	27
D. FAQs .....	28
Regulatory Agency Compliance .....	30

## Welcome

Welcome to the Sonocaddie guide. This guide has been designed to provide you with everything you need to know about operating your Sonocaddie. Please read the user guide thoroughly in order to understand the features of the Sonocaddie.

Note that there are multiple ways to navigate and use the various Sonocaddie functions. Sonocaddie is very intuitive to use, so feel free to use whichever way you find to be the easiest.

## Warnings

Please read the guidelines below, since failure to do so may result in mis-use of the equipment and may be dangerous or illegal.

**The Global Positioning System (GPS) is operated by the government of the United States, which is solely responsible for its accuracy and maintenance. The system is subject to changes which could affect the accuracy and performance of all GPS equipment.**

### ● Operating

- **Sonocaddie may take at least 10~15 minutes to receive satellite signals the first time you turn it on. It may take longer to receive signals if it has been off for 4 or more hours, or if you traveled more than 100 miles away from the last location where you used your Sonocaddie.**
- **Sonocaddie performs best under clear sky. Furthermore, 6 satellite signals should be sought, so it might be necessary to wait for these to be registered.**
- Should you experience any problems with your Sonocaddie (e.g. malfunction/damage) please contact Sonocaddie Customer Service at [www.Sonocaddie.com](http://www.Sonocaddie.com). Do not attempt any repairs on your own as this may void the warranty.
- The USB cable provided is solely for the use of Sonocaddie devices (see the accessory list). Do not connect any other cable for data transfer as this could damage the data port (I/O port).
- A full battery charge may take 4 hours. We recommend not charging over 8 hours.

## Cautions

### ● Golf course

- Sonocaddie should not be used while driving any vehicle including golf carts. Always place Sonocaddie in a secure place to avoid any impact which could cause damage to it.

### ● GPS reception

- Sonocaddie has a built-in GPS antenna. This antenna should face upward to gain the best signals and should not be covered with anything as this may affect the quality of reception. **GPS reception might be affected by the following environmental factors such as rain, dense clouds, fog, solar flares, high voltage electricity, cellular phone towers, etc.**
- Coverage/reception levels may be adversely affected by forests and/or buildings. Optimal usage will be gained in wide open areas.

**Packing List**

- Sonocaddie AUTO PLAY
- Mini USB Cable
- Rechargeable Battery
- User's Guide
- Belt Clip
- AC Charger Adaptor
- Carry Pouch



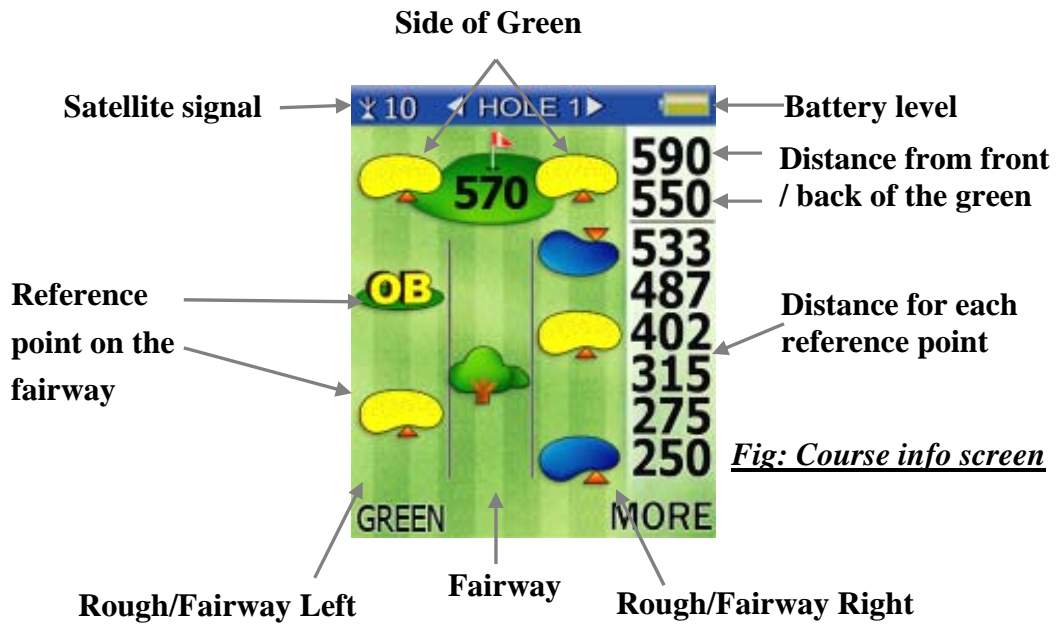
The Serial Number

**Chapter 1. Introduction**

**1.1 Features**



**1.2 Display**















Press "Mark" button or enter "Mark" function from "Main" screen to enter the shot distance screen.



**Distance unit**

- YD= Yard
- M= Meter
- ML= Mile
- KM= Kilometer

### 1.2.1 Symbol Description

Status explanation	Symbol
Bunker Front/ Back	
Water Front/ Back (includes major water hazards)	
* 2 <sup>nd</sup> Green Front/ 2 <sup>nd</sup> Green Back	
Creek (includes: river, ditch and stream)	
Trap	
Tree (includes: shrubbery and forest)	
Hills or Mounds	
Lay-up area	
Out of Bounds (OB)	
Dogleg Left/ Right	
Rock	
Delete	

**\*Note:** For some courses that have two greens on one hole these icons provide distance for the extra green.

### 1.2.2 Status Area

#### ➤ Satellite signal




Satellite signal	0~2	3~5	5~6	6~8	8~10	>10
Accuracy	None	Poor	Fair	Good	Very good	Optimal

#### **Important!**

To achieve optimum accuracy it is advised that Sonocaddie performs best under clear sky conditions. Furthermore, 6 satellite signals should be sought, so it might be necessary to wait for these to be registered.

### 1.2.3 Battery level

Quickly confirm remaining battery level with the on-screen battery gauge.

Scale of power			
Conditions	Full	Empty	No battery *

\* Note: This symbol indicates that: 1.The unit is without battery. 2. The battery is inserted incorrectly. 3. The battery is defective (contact customer service).

## Chapter 2. Getting started

### 2.1 Charging

Please insert the supplied rechargeable battery correctly as below. A full battery charge may take up to 4 hours and we recommend that you do not charge over 10 hours.

\* Note:

1. Please charge the battery at least 8 hours for first time use.
2. Please remove the battery if you will not use the unit for a long period of time to avoid the battery leaking and damaging the Sonocaddie.



## Chapter 3. Before starting a Game

### 3.1 Power ON/OFF



**Power ON:** Press the “**Power button**” for at least 3 seconds to turn the Sonocaddie on. The MAIN screen will appear.

**Power OFF:** To switch Sonocaddie off, simply press the “**Power button**” for at least 3 seconds or select “**OFF**” function from the “**MAIN**” menu and then press “**YES**”.

#### **Important!**

Please allow approximately 5~10 minutes when turning the Sonocaddie on to search for GPS signals (make sure to be in an open-sky area).

### 3.2 Main Menu

#### 3.2.1 GPS : Provides the GPS reception status information.

Note: Lower DOP numbers provide better accuracy.

Number of Satellite being received

The screenshot shows the 'GPS STATUS' screen with the following elements:

- Number of Satellite being received:** Indicated by '8' at the top left of the screen.
- Dilution of Precision (DOP):** Shown as 'DOP 0.5' on the right side.
- Each satellite signal strength:** Represented by a bar chart with 8 bars and corresponding signal strength values: 39, 38, 38, 39, 39, 36, 37, 34.
- Latitude:** 25°04'50.4"N
- Longitude:** 121°34'05.5"E
- Time/ Date Display:** 11:49:51 and FEB 23, 2009.

DOP = Dilution of Precision  
 Dilution of precision (DOP) is a measure of the quality of the GPS data being received from the satellites. DOP is a mathematical representation for the quality of the GPS position solution. The main factors affecting DOP are the number of satellites being tracked and where these satellites are positioned in the sky.

**Important !**  
 To achieve optimum accuracy please be aware that Sonocaddie performs best under clear sky conditions. Since at least 6 satellite signals should be sought, it might be necessary to wait for these to be registered.

#### 3.2.2 Settings

The image shows two screenshots of the device's menu system:

- MAIN Menu (Screenshot 10):** Displays various icons for navigation, settings, and other functions. The 'SETTINGS' icon is highlighted.
- SETTINGS Menu (Screenshot 9):** Lists the following options: LANGUAGE, TIME ZONE, DISTANCE UNIT, THEMES, BRIGHTNESS, BACKLIGHT TIME, AUTO TRACK, and TRACK INTERVAL. The 'LANGUAGE' option is currently set to 'English'.

There are 9 selections in SETTINGS:

- 1. LANGUAGE:** English/ French/ Deutsch/ Spanish/ Simplified Chinese/ Japanese/ Traditional Chinese
- 2. TIME ZONE:** Please choose your correct time zone
- 3. DISTANCE UNIT:** YARD / METER/ MILE/ KILOMETER
- 4. THEMES:** BLUE / PURPLE/ GREEN/ ORANGE

5. **BRIGHTNESS:** OFF/1/2/3/4/5
6. **BACKLIGHT TIME:** ALWAYS/ 15 SECONDS/ 30 SECONDS / 60 SECONDS/  
ALWAYS
7. **AUTO TRACK:** ON /OFF
8. **TRACK INTERVAL:** 10 SECONDS/ 20 SECONDS/ 30 SECONDS
9. **AUTO HOLE:** ON/ OFF
10. **SCORECARD:** NORMAL/ PRO

※ Please be sure to press “SAVE” after completing all settings.

## Chapter 4. Course Management

All available courses are preloaded in your device. If you need to update the course information, please read the instructions in chapter 4.

### 4.1 Before Uploading Course Information

#### 4.1.1 Login or Join Free Sonocaddie Membership

A free membership account is required to update course data. Please link to “Member” on AUTO PLAY Software or go to AUTO PLAY website, “Member” page at [www.sonocaddie.com](http://www.sonocaddie.com) to join the membership in advance.



Important!

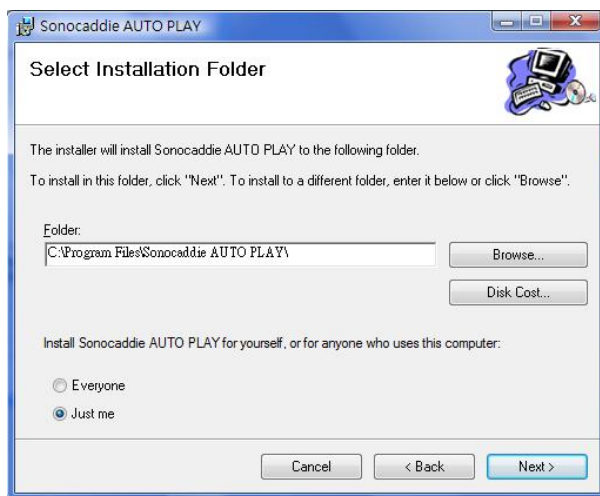
Serial Number (S/N) is required to join Sonocaddie AUTO PLAY membership.

#### 4.1.2 Install “AUTO PLAY Software” in Your Computer

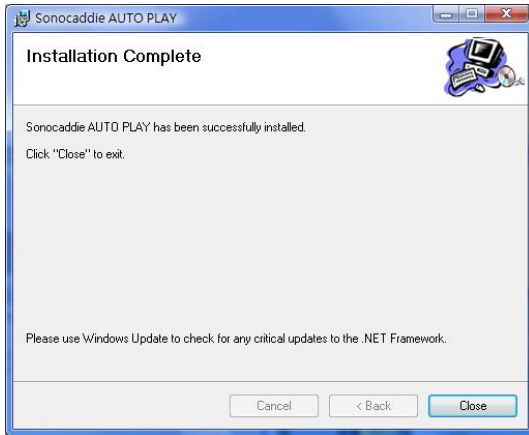
This application software is used for you to access and download course information and manage your AUTO PLAY personalized course folder. Please install it from enclosed CD or from website at [www.sonocaddie.com](http://www.sonocaddie.com).

System Support: Microsoft Windows 2000/ XP/ Vista

1. Follow the instructions displayed on the screen to complete the installation.



2. After completing installation, please press “Close” to finish. A Sonocaddie shortcut will appear on your desktop. Double clicking the Sonocaddie shortcut icon will start “Sonocaddie AUTO PLAY” software.



### 4.1.3 Connect AUTO PLAY and Computer

Step 1. Turn on Sonocaddie AUTO PLAY.

Step 2. Connect the USB Cable between Sonocaddie AUTO PLAY and Computer. On your Sonocaddie display you will see the message “USB cable connected. Enable USB link now? ”. Press “YES” (right soft key) to link the unit with your computer.



### 4.2 Update Course Data

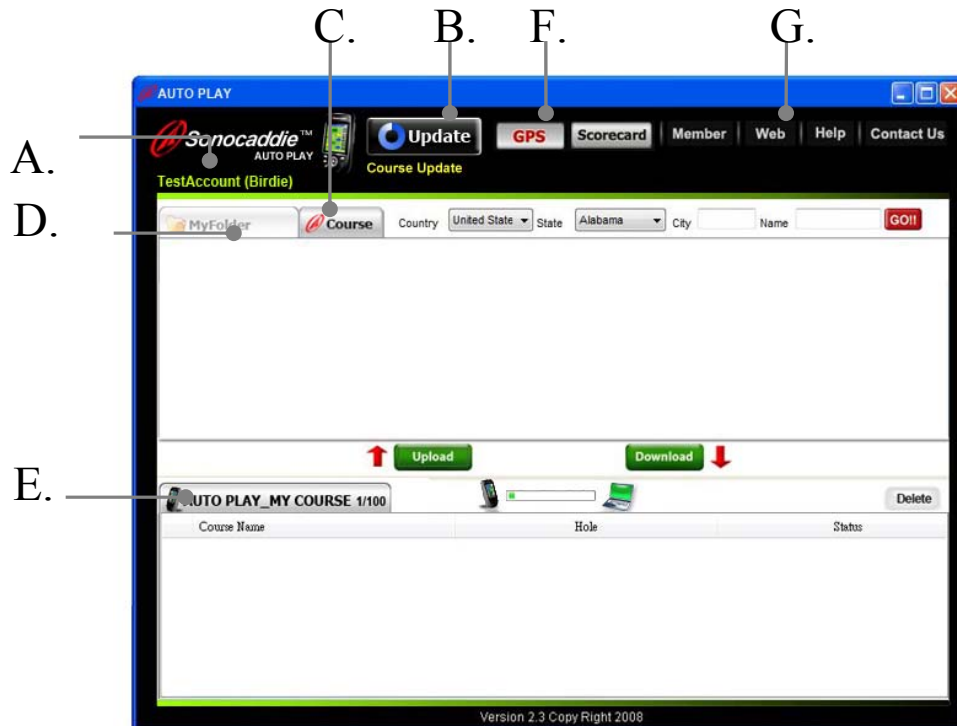
Step1. Open Sonocaddie AUTO PLAY Software and Log in.



#### **Important!**

Internet connection is required to log into AUTO PLAY Software to update course data.

You must fill in your email and password to run AUTO PLAY Software. This is the same email address and password you used to create your member account.



**A. Information bar:** User's name/ Type of Membership Plan/ Membership Valid Period/ Registered Country

**B. Update button:** 

You can update your COURSE LIST by pressing "Update" button when there are new updated courses available. The update button will only appear on the screen when there are new courses available in our database.

Steps to update course data:

Step1. Press Update button on the screen. The update process on the computer will take approximately 15~20 minutes to complete.

Step2. Disconnect the USB Cable between Sonocaddie AUTO PLAY and computer after the updating process is finished on the software. The device will take few minutes to update the course data.

Step3. Press "ESC" button after the updating process is finished in the device. Sonocaddie AUTO PLAY will shutdown automatically.

Step4. Turn on the AUTO PLAY, and the course data will be the most up to date.


**Important!**

Please do not disconnect the cable between AUTO PLAY device and computer when updating.

**C. Course Tab** 

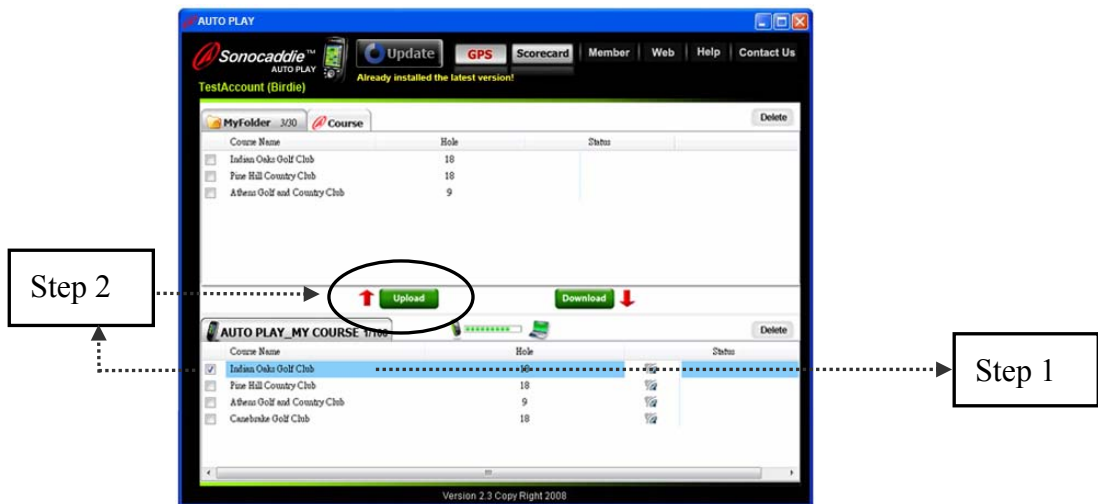
The Course Tab can only update the course information for individually selected courses. Please see function B. for further information.

### 4.2.1 Manage data in AUTO PLAY

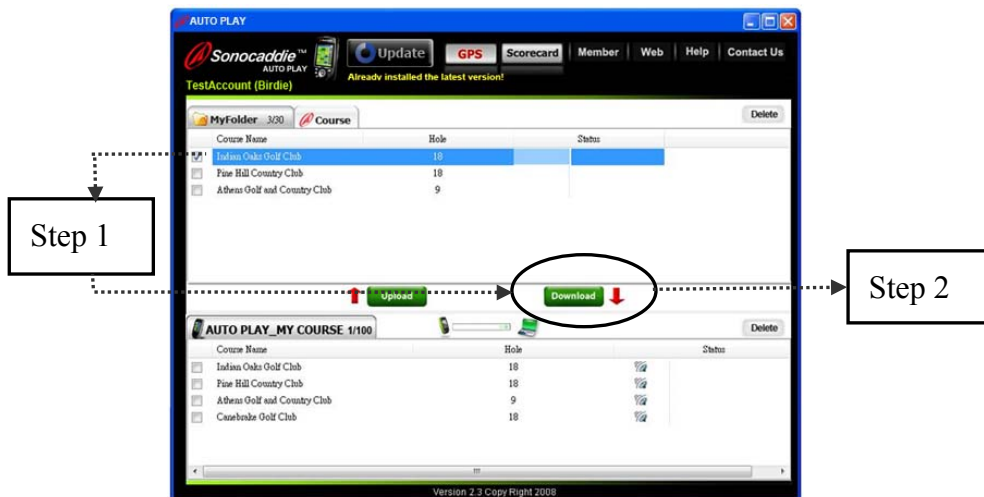
**D. My Folder Tab:**  for uploading or downloading course data.

This is the personal folder to manage your data. You can upload or download GPS data (30 courses) or Scorecard (100 records) between your AUTO PLAY unit and this folder. (Par level member has NO access to “My Folder” unless the membership has been upgraded.)

- Steps to upload course data from Sonocaddie AUTO PLAY to MyFolder:  
 Step1. Select the specific course in your device.  
 Step2. Press “Upload” to upload course data to MyFolder.



- Steps to download course data from MyFolder to Sonocaddie AUTO PLAY:  
 Step1. Select the specific course in MyFolder.  
 Step2. Press “Download” to download course data to Sonocaddie AUTO PLAY.

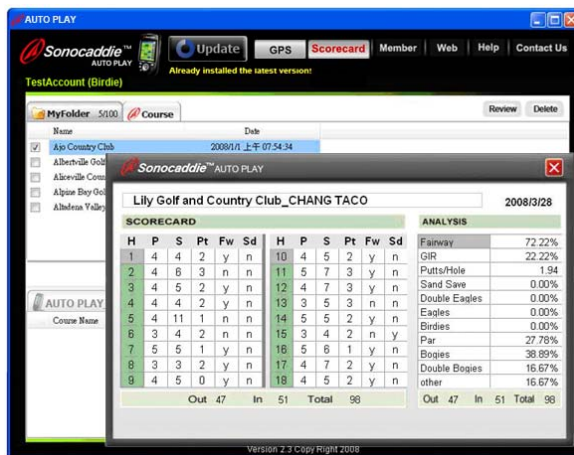
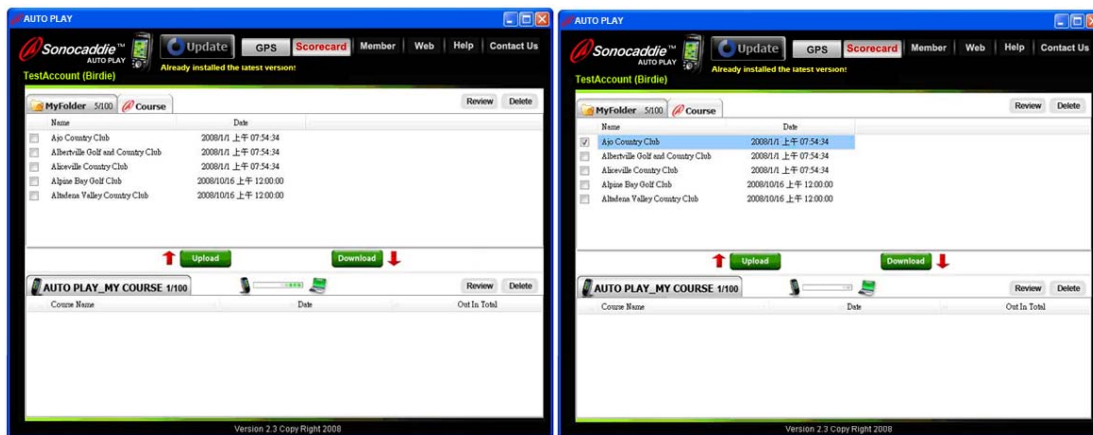


- This picture indicates this specific golf course has scorecard information.
- This picture indicates this specific golf course has GPS information.

**E. AUTO PLAY Tab:**

When linking with AUTO PLAY device, the course data/ scorecard in “MY COURSE” is ready to be uploaded, deleted, renamed and reviewed (scorecard record only).

- Upload:** You can upload the Scorecard (up to 100 records) data to “My Folder” tab.
- Delete:** Check the box beside the course data/scorecard you wish to delete, and press “Delete” button to remove the data.
- Rename:** Double click the data name to rename.
- Review (scorecard only):** Review scores and analysis of your round(s).



To review scorecard record, please press “Scorecard” button on the top of the display, then check the record you want to review. Press the “Review” button, and the scores and analysis will show on the display for you to review your game. You can review the scorecard records both in “AUTO PLAY” tab and “My Folder” tab.

Note: Please do not disconnect the USB cable between AUTO PLAY device and computer when transferring data.

**F. GPS/ Scorecard buttons** on the top of the display:

These buttons bring up the course data from your Sonocaddie AUTO PLAY unit. You can switch to review GPS and Scorecard data simply by pressing the buttons.





Note: Please do not disconnect the cable between AUTO PLAY device and computer when transferring.

**Important!**  
 When you are in the “AUTO PLAY” tab and press the “GPS” button, the “My Folder” tab will also switch to GPS data. When pressing the “Scorecard” button, both “AUTO PLAY” and “My Folder” tab will also switch to scorecard data.

**G. More functions:**

Pressing the function buttons at the top-right of the screen will link you to the Sonocaddie AUTO PLAY website for further information and assistance.



**Important !**  
 If your membership has expired, access to AUTO PLAY Software will not be allowed unless the membership is renewed. The Sonocaddie system will remind you by email prior the expiration date. For further information or assistance, please go to [www.sonocaddie.com](http://www.sonocaddie.com) or email to [sales@sonocaddie.com](mailto:sales@sonocaddie.com) for help.

**Chapter 5. Starting a game**

**5.1 Start with Existing Courses**

**5.1.1 Course Auto Search**

Select “AUTO SEARCH” from the “Main” menu to enter the searching function. Select a range from 5 miles to 50 miles, and all courses within the area will be displayed. The nearest course will be on top of the list. (NOTE: If a course is not displayed it is not in your AUTO PLAY Unit. See Section 4.2.B to update your course list, or 5.2 to self map a course, or contact [mapping@sonocaddie.com](mailto:mapping@sonocaddie.com) to have us map this course for you.) Press “More” to select the course you want to play or arrange the order of courses by distance or by course name.

**Important!**  
 If you want to edit the selected course, by pressing “COPY”, the selected course will be copied into MY COURSE for you to edit the reference points.



Note: This function can only be activated when there is GPS reception.

**Important!**

You must select a course and a hole first. Then, SCORECARD function and reference points function can be used.

### 5.1.2 Search Courses from COURSE LIST (Manual Search)

Select "COURSE LIST" from "Main" menu to enter the searching function. There are two methods for you to search your course from all available courses preloaded in the device:

1. By Country: All the courses are listed by country. You can find your course by selecting "Country", "State" and "City". Press "SEARCH" button after every selection, then you will see all the available courses within the area.
2. By History: Previous play will automatically add to COURSE LIST sorted by history. This function can memorize the last 30 courses.

**Important!**

If you want to edit the selected course, by pressing "COPY", the selected course will be copied into MY COURSE for you to edit the reference points.

### 5.1.3 Auto Hole

First, user must select the starting hole manually. After finishing a hole and entering the next tee box, the Auto Hole function will advance to the next hole automatically.

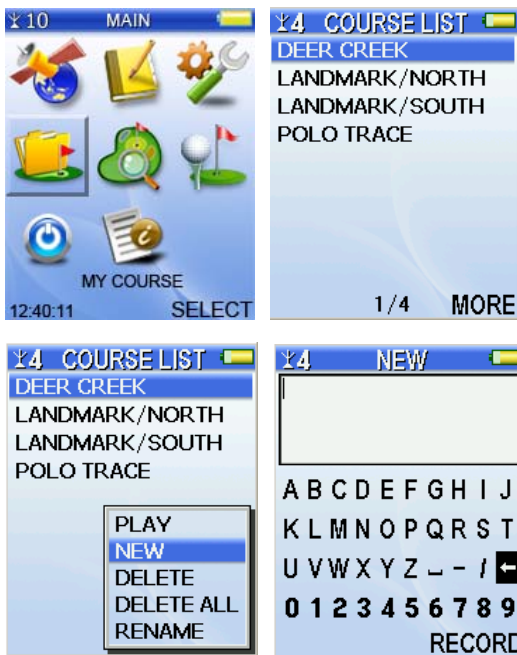
**Hole selection  
button**



**Important!**  
 The user can choose to change holes manually at anytime using the "Hole Selection" button, or by scrolling left or right through the holes using the "5 way" key.  
 Auto Hole function can be turned on/off from "SETTINGS".

## 5.2 Course Management for AUTO PLAY device

### 5.2.1 Create a New Course

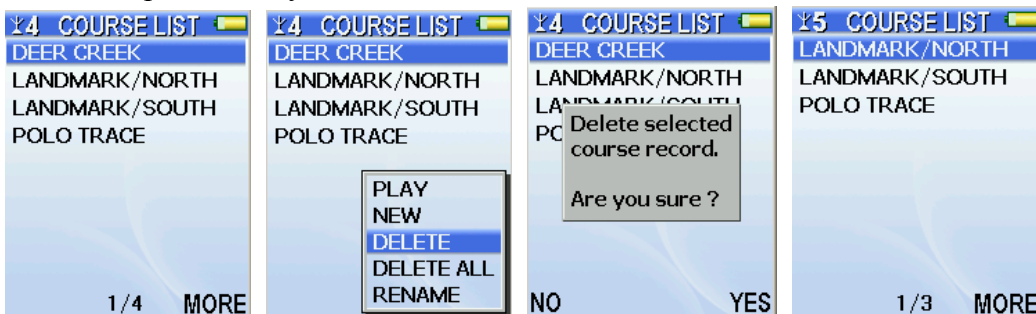


Select "**MY COURSE**" from the "**Main**" menu and press "**MORE**" to select "**NEW**" after you entered the course list.

Key in the course name by using the 5-way key. Then please press "Record" to save it. The new course you created will show on the course list right away.

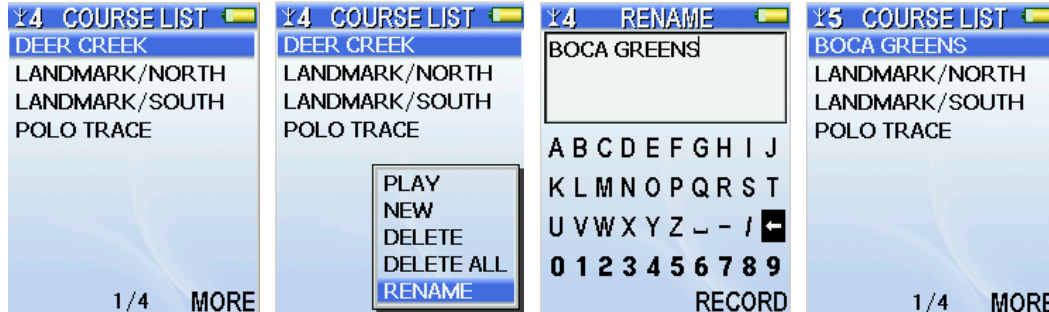
### 5.2.2 Delete a Course

From the "COURSE LIST" screen, select a course name, and press "**MORE**". Select "**DELETE/DELETE ALL**" to delete the selected course or to delete all courses at once. When the confirmation dialog box opens, press "**YES**" to confirm or "**NO**" to go back. Once "**YES**" is selected, the course information and all reference points will be deleted permanently.



### 5.2.3 To Rename a Course

From the "COURSE LIST" screen, select the course you wish to rename. Press "MORE" and select "RENAME" from the pop-up list using the 5-way key. To rename, use the 5-way key to edit the course name.



### 5.3 Adding New Reference Points

Users can record reference points on the course while playing.

#### 5.3.1 Mapping a hole

Bring up the "Course info" screen. Standing at the reference points which you would like to add, press "EDIT", and navigate the cursor to the appropriate location on the screen. Press "SELECT" to go to the "ICON" screen. Choose the correct icon for the new reference point, and while standing still, press "RECORD". Press "Esc" key to complete the mapping and return to the Course Layout Screen.



**Important!**  
 Sonocaddie performs best under clear sky. Furthermore, 6 satellite signals should be sought, it might be necessary to wait for these to be registered.

**Important!**  
 Each row only allows one reference point. **Maximum of 10 reference points per hole-**(on/off fairway, Green Front/Back and next to Green) can be recorded. It is suggested that each reference point should be recorded based on the order of course features for that hole. All reference points' distance will disappear when standing within 5 yards. To record a reference point, the player must stand still for 5 seconds at the reference point before pressing "Record". The yardage will show "0" right away when you press record.

### 5.4 Reference Points next to Green

To add icons to the side of the green, (for example, add a water icon to the left of the green) press “**SELECT**” (right soft key) and then choose from the icons.



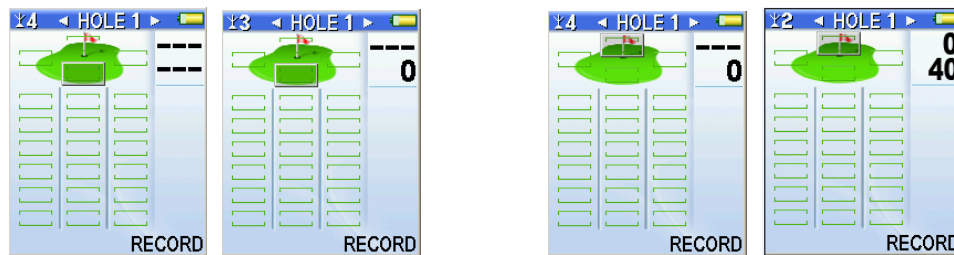
**Important!**  
 These two reference points do not provide any distance yardage.

### 5.5 Reference Points on Green

To add Green reference points, stand at the front or back of the green, select the Green front or back icon and press “**RECORD**” to record the coordinates.

**Add Green Front:**

**Add Green Back:**



### 5.6 Editing Reference Points

Users can edit existing reference points according to their preference while playing on the course.

If the icon on the screen of the actual course is incorrect and needs to be changed, stand at the reference point, press “**EDIT**” and choose the particular reference point icon that requires editing. Then press “**SELECT**” and choose one icon from the icon page. Press “**RECORD**” and the icon is now changed to the new icon.



If the Sonocaddie shows an incorrect distance to the course feature, users can update the new coordinates by standing at the reference point, pressing “**EDIT**” and choosing

the particular reference point icon that requires updating. Press “**SELECT**” to go to the icon page. Highlight the same icon on the icon page, and press “**RECORD**”. The distance is now corrected permanently.

**Important!**  
 To record a reference point the player must stand still for 5 seconds at the reference point before pressing “**RECORD**”. The yardage will show “0” right away when you press record.

### 5.7 Delete Reference Points

Press “**EDIT**” and then highlight the particular reference point icon that requires erasing. Press “**SELECT**” to go to the icon page. Highlight the “**DELETE** icon” and press “**DELETE**”. The reference point is now deleted.

Once erased, the previous reference point icon and yardage distance will disappear from the screen. (Note: the same procedure should be followed to erase reference point icons on both sides of green)



### 5.8 Green Close-Up Function

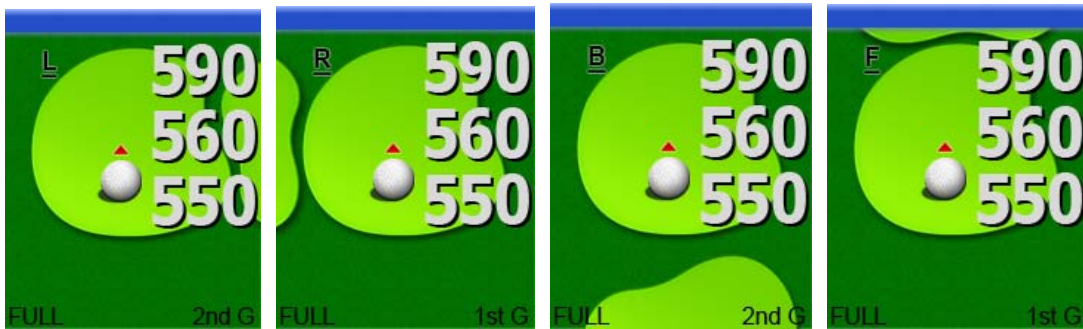
At any time during your round, press “**GREEN**” to get a close-up view of the putting green. There are 2 additional coordinates other than the distance of front, center and back of the green, the yardage will change continually showing three intermediate distances on the green indicated by the changing ball location. Press any button to lock in your desired location. Press “**FULL**” to go back to the previous screen.



#### 5.8.1 Double Green

Sometimes a hole will have a double green. In this event, AUTO PLAY will show double green. To be sure you are viewing the correct green, the first green display will

show the second green according to its position. For example, if the first green is on the left of the second green, it will show an L on the left top side of the first green. Press "2<sup>nd</sup> G" to go to the second green display and press "1<sup>st</sup> G" to return.



### 5.9 Mark Function (Shot Measurement)

The Mark function is used to measure distance of each shot. After hitting a shot, press the 'START' button and proceed to the ball. The distance figure will lock after pressing 'END'. The display then shows the distance of the actual shot.

**Important!**  
The user does not have to travel in a straight line to the ball. The distance shown on the display is always the straight line distance from where the 'START' button was pressed.

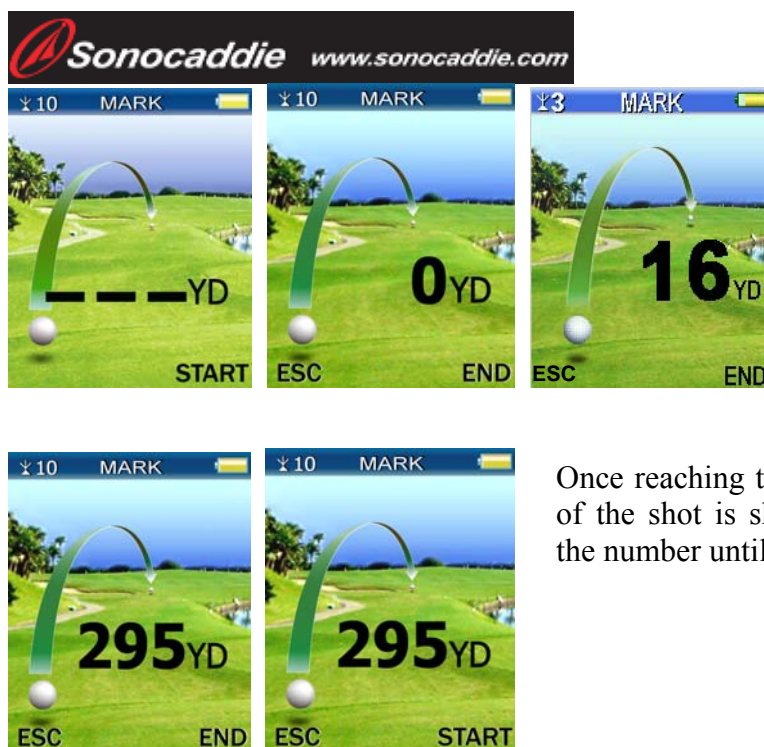
The Mark Function can be used anytime, except when the 'Green View' function is activated. Press 'MARK' button (Right side key) directly.



← **Mark button**

**Important!**  
This function can only be activated when there is GPS reception.

To begin, press "START" at the point from where the shot is taken. The screen will show '0' on the display. When you move toward the ball position, the yardage number will increase according to your location.



Once reaching the ball position, the the distance of the shot is shown. Pressing “**END**” locks in the number until “**START**” is pressed again.

## 5.10 Scorecard Function (Optional Function)

### 5.10.1 Activate your scorecard function

After you join or upgrade membership, the scorecard function is ready to be activated.

Steps to activate the scorecard function:

Step 1. Connect the cable between AUTO PLAY device and PC.

Step 2. Log in to the AUTO PLAY Software.

#### **Important!**

Scorecard is an optional function in AUTO PLAY. Please visit our website for further information.

### 5.10.2 NORMAL and PRO function

Sonocaddie provides a scorecard function that allows you to score your personal round and provides an analysis of your round...

There are 2 types of scorecard functions, “NORMAL” and “PRO”. Normal keeps track of total strokes only, and adds all strokes to provide scores for both front nine (out) and back nine (in).

To choose either “NORMAL” or “PRO”, go to the “SETTINGS” screen, scroll down to “SCORECARD” and choose either “NORMAL” or “PRO” with the left-right 5-way key. Press “SAVE” (right soft key) to save the setting..

In the “PRO” scorecard you can enter Par (P), Strokes (S), Putts (Pt) in numeric form, and Fairway Hit (Fw) and Sand Save (Sd) as either Y (yes) or N (no). Note: when

Sonocaddie has the course information stored, and you go to the "SCORECARD" screen during the round, the "Par" field will automatically show the par for the hole you are playing.

16 SCORECARD						
H	P	S	Pt	Fw	Sd	
1	4	4	2	N	N	
2	3	3	2	Y	N	
3	4	4	1	Y	Y	
4	4	5	2	Y	N	
5	5	4	2	Y	Y	
6	4	4	2	Y	Y	
7	4	4	2	N	N	
8	3	2	1	N	Y	
9	5	5	2	Y	Y	
Out 35 In 36						71
ANALYSIS						

**PRO**

H = Hole  
 P = Par  
 S = Score  
 Pt = Putt  
 Fw = Fairway  
 Sd = Sand

17 ANALYSIS	
Fairway	72%
GIR	78%
Putts/Hole	1.78
Sand Save	92%
Double Eagles	0%
Eagles	0%
Birdies	28%
Par	56%
Bogies	17%
Double Bogies	0%
Other	0%
Out 35 In 36 71	

**Important!**  
 To have **GIR** analysis, Par number, Score and number of Putt are required to input.  
 To have **Sand Save** analysis, input "Y (yes)" or "N (no)" on "Sd" space, and it will automatically calculate according to your scores.

Use 5-way key left or right to select the item which you want to change. Up and down to enter your scores. After finishing the 1~9 holes scores, please use 5-way key to go to next 9 holes. Press 'Esc' button to go back to the previous page. All scores will be saved automatically. Press "ANALYSIS" to view compiled statistics and the scores for that round.

16 SCORECARD					
H	P	S	H	P	S
1	4	4	10	4	5
2	3	3	11	3	4
3	4	4	12	4	3
4	4	5	13	4	4
5	5	4	14	4	4
6	4	4	15	5	4
7	4	4	16	4	3
8	3	2	17	4	4
9	5	5	18	5	5
Out 35 In 36					71

**NORMAL**

H = Hole  
 P = Par (unchangeable)  
 S = Score

NOTE: When using "NORMAL" scorecard, there is NO "ANALYSIS" function available.

Use the up and down 5-way key to choose the hole number and then use the left or right 5-way key to enter your scores. Press the 'Esc' key to go back to the previous page and the scores will be saved automatically.

**5.10.3 Enter Scores**

Select the course to play, press "Scorecard button" during the game, and enter scores directly.

**5.10.4 Review Scorecard and View Analysis**

Sonocaddie can save scores for up to 100 rounds. To view prior scores, go to "SCORECARD" from the "MAIN" menu and "SELECT" one course. With this feature you can review previous scores, analysis and also edit them.

**Important!**  
 Scorecard's scores will be saved for that Course until the user clears the scores or deletes the course.

## Appendices

### A. Specification

- **Size**
  - H 108mm×W 53.5mm×T 28.4mm (H 4.3"×W 2.3"×T 1.1")
- **Weight**
  - 140g ( 4.9 ounces)
- **Screen**
  - 2.2" high-resolution color LCD w/ Backlight
- **Operating temperature**
  - Maximum 70 ° C / 158 ° F
  - Minimum -5 ° C / 23 ° F
- **Storage**
  - Course: 30
  - Scorecard: 100
- **Battery**
  - Rechargeable battery
  - 12 hours in normal operation (may be different by the frequency of backlight on)
  - Battery charging time: 8 hours in operation mode, 5 hours in power-off mode
- **Acquisition Rate**
  - Cold start: Approx 5~10 minutes
- **Accuracy**
  - 3 Meters CEP (80%), 7 Meters CEP(90%) horizontal, SA off
- **Built-in GPS Receiver**
- **Built-in High Sensitivity GPS Antenna**
- **Waterproof, IPX6**

**B. System Requirement**

- Windows 2000/XP/Vista
- CD-ROM
- 512 MB RAM (XP) 、 1 GB RAM (Vista) or higher
- 12 MB or more hard disk space

### **C. Description Abbreviations**

Lat = Latitude

Lon = Longitude

DOP = Dilution of Precision

P = Par

S = Score

H = Hole

Hcp = Handicap

Pt = Putt

Fw = Fairway

Sd = Sand

GIR = Green in Regulation

B/BK = Back

F/FT= Front

CT = Centre

YD = Yard

M = Meter

ML = Mile

KM = Kilometer

ESC = Escape/ Previous page

1st G = First Green

2nd G = Second Green

R = Right

L = Left

F = Front

B = Back

## D. FAQs

### **Q1. What do I do when my Sonocaddie is not detecting a signal?**

A. Your Sonocaddie uses the global satellite positioning system, (GPS) and works best in wide, open spaces, regardless of weather. In order to receive GPS signals you must be in an open sky area, away from buildings, trees cliffs, etc. The first time you start Sonocaddie in a new area it may take up to 10~15 min. to receive sufficient satellite signals. You may monitor GPS signal reception on the 'GPS Status' screen. Once you receive 6 or more stable satellite signals Sonocaddie will provide very good accuracy.

Otherwise it won't receive GPS signal and will show nothing on the display. After turn-on, there should be a number on the upper-left corner of the screen, which means the number of satellites received. If showing "X", it means no signal.

If you are on the course, all distance numbers will automatically show on the screen. However the limit of displayed number is set to 999 yards. Therefore any distance beyond 999 yard will show 999 only. Besides, if the unit shows " — — " when the satellite is available, it means that the distance is within 0~5 yards.

### **Q2. How can I track my driving distance?**

A. Sonocaddie uses the global positioning satellite system (GPS). Simply press a button to record the beginning coordinates of your shot and the end coordinates of your shot and Sonocaddie will accurately calculate the shot distance. Please consult the user guide for more details.

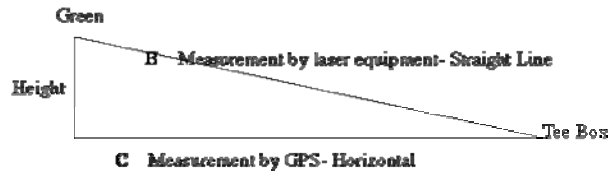
### **Q3. Can I connect my Sonocaddie to other computer devices?**

A. Apart from the computer systems approved by Sonocaddie, we do not provide any assurances, and advise against attempting to connect it to any non-approved devices.

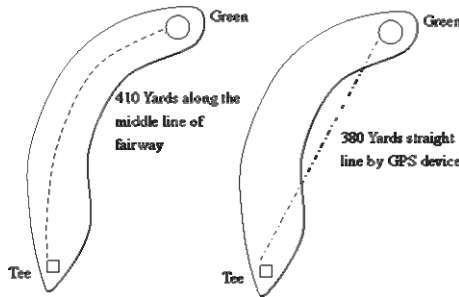
### **Q4. Why is the distance of the course marker different from the distance measured by Sonocaddie?**

A. 1. First, please make sure that the distance unit either in Sonocaddie or the course is the same (i.e. "YARDS" vs. "METERS"). If they are different, please go to 'Settings' in main menu and select "Yard" or "Meter" as the right unit.

2. Some courses measure the distances by using laser equipment. If the Green and Tee box are not at the same horizontal level, the yardage numbers could be different from the one of Sonocaddie. Most Golf GPS devices measure the distance only in horizontal level, which is more useful for golfers than straight-line of laser unit.



3. However, some courses measure the distance from tee box to the green along the middle line of fairway. For example, the distance on the tee mark or scorecard shows 410 yards, but Sonocaddie only shows 380 yards. Please see figure below.



**Q.5 Will I lose my data when the power goes off on my Sonocaddie?**

A. The data you store in your Sonocaddie will never be lost unless you edit or erase the data on purpose.

**Q6. Why are the distances shown on Sonocaddie incorrect for each hole on this course?**

A. Please check the GPS reception on the GPS Status screen at the time to be sure you have at least 6 stable satellite signals. Also check the Settings menu (Wrench icon) to be sure the distance units (yard or meter) are correct.

In addition, the distance in GPS device is not related with the locations of tee boxes-The distance is calculated based on the difference between the apparent position and the known position. The apparent position is the moveable location of the GPS device which receives the signal. The known position is the position of the target or reference point.

The known position is fixed and is the coordinates, such as bunker and green, downloaded from the database of website. Therefore when you stand by the tee box (apparent position of GPS device you carry), the unit will calculate the distance between you and the green (known position).

**Q7. Can I connect Sonocaddie to Mac OS?**

Sonocaddie is not compatible with Apple Mac OS systems including X Leopard and Windows XP under Virtual PC in the short term.

## Regulatory Agency Compliance

### Federal Communications Commission (FCC)

*This device complies with part 15 of the FCC Rules. Operation is subject to the following two conditions: (1) this device may not cause harmful interference, and (2) this device must accept any interference received, including interference that may cause undesired operation.*

**NOTICE** The FCC warns that user modifications of this device without the express approval of Sonostar Inc. could void the user's authority to operate the device.



V.3.0.0.1\_E